

# Clostridium difficile antigen GDH detection kit

CerTest  
BIOTEC

## Pathogen and product description

*Clostridium difficile* (*C. difficile*) is the major aetiological agent of diarrhoea and colitis associated with antibiotics. *C. difficile* is the most common cause of health care-associated diarrhoea in developed countries and is a major source of nosocomial morbidity and mortality worldwide.

Disease due to *C. difficile* develops when the organism is allowed to proliferate in the colon, most commonly after antibiotic use has eliminated competing flora.

*Clostridium difficile* Glutamate Dehydrogenase (GDH) is an enzyme produced in large quantities by all toxigenic and non-toxigenic strains, making it an excellent marker for the organism.

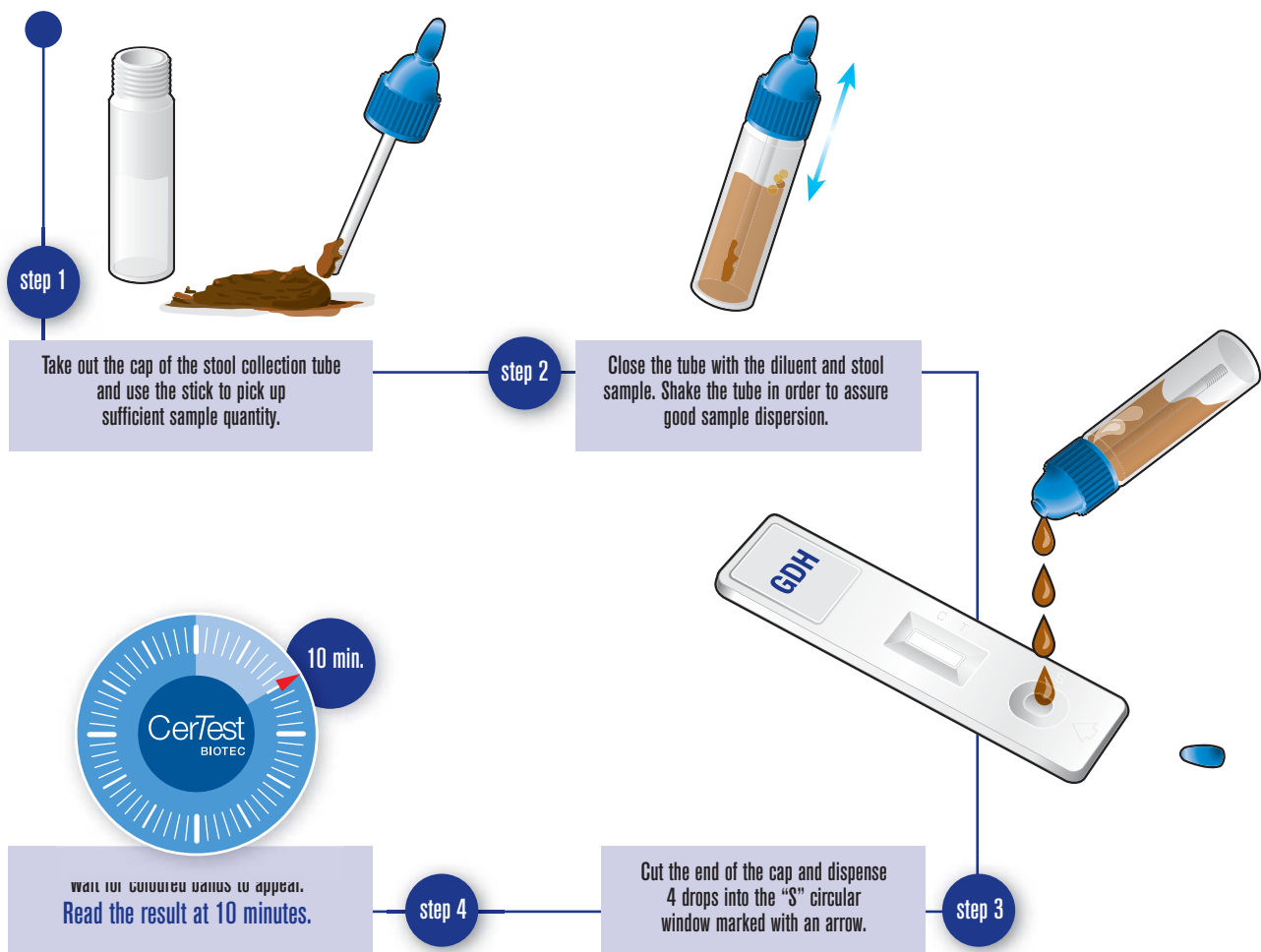
CerTest *Clostridium difficile* antigen GDH card test offers a coloured chromatographic immunoassay for the qualitative detection of *Clostridium difficile* Glutamate Dehydrogenase (GDH) in stool samples.



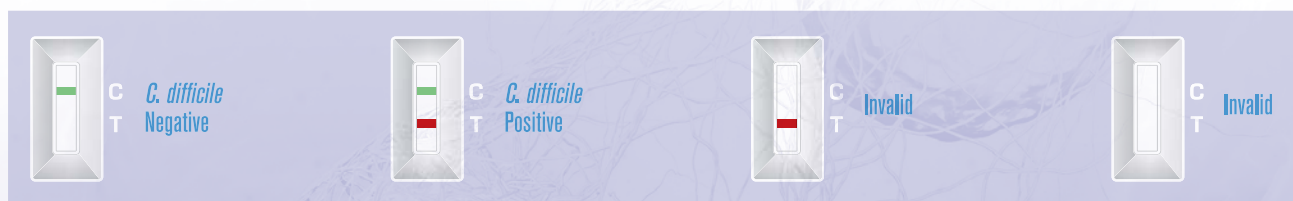
# Clostridium difficile antigen GDH detection kit



## Test procedure



## Interpretation of the results



## Clinical Sensitivity and Specificity

	Sensitivity	Specificity	PPV	NPV
CerTest Clostridium difficile antigen GDH vs <i>C. DIFF</i> QUIK CHEK Complete®	>99%	>99%	>99%	>99%



CERTEST BIOTEC, S.L.  
Pol. Industrial Río Gállego II, Calle J, Nº 1,  
50840, San Mateo de Gállego, Zaragoza (SPAIN)  
www.certest.es



GDH15EN

Distributed by Abacus dx

1800 ABACUS (AUS) 0800 222 170 (NZ) | info@abacusdx.com | www.abacusdx.com

abacus dx